

IT ASSET MANAGEMENT, DATA PROTECTION AND THEFT RECOVERY



IT Asset Management



Data & Device Security



Geotechnology



Theft Recovery



Service Guarantee



Manage

Monitor and manage all of your IT assets within the Absolute Customer Center (regardless if a device is on or off your LAN).

Protect

In the event of loss or theft, remotely delete all sensitive information to protect the private information of students and teachers.

Recover

Report a theft and engage the Absolute Theft Recovery Team who will work with local law enforcement to recover your property.

Guaranteed!

Receive up to \$1000, if we are unable to recover your computer.

If you're in charge of the IT budget for your school, you know there's no magic pot of money you can rely upon to replace lost or stolen computers. With a large student body, a fixed inventory of computers, and no supplementary budget – controlling your computer population is an absolute requirement.

Computrace® products by Absolute® Software allow you to centrally manage your school's IT assets within a single interface. You can quickly identify any computers that have gone missing, enforce software policies, and maintain a fleet of optimally running devices.

And – in the event of theft – Computrace products can help you recover your computer.

How It Works

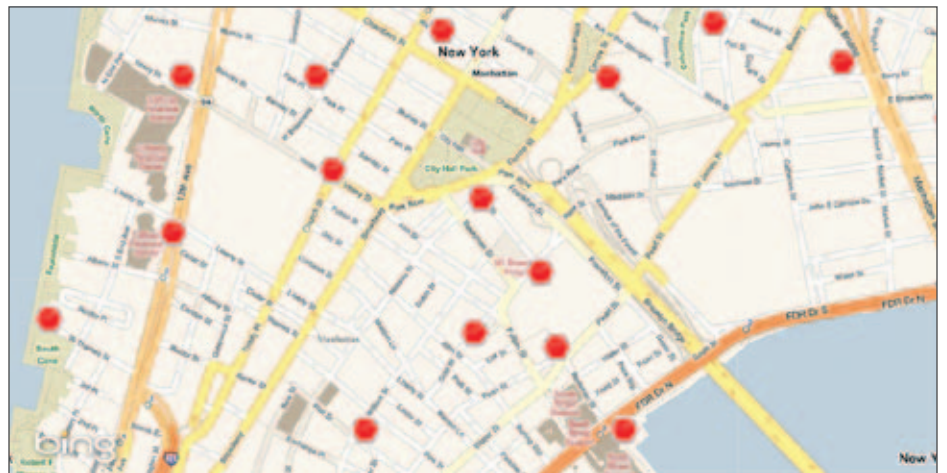
Through our partnership with leading computer manufacturers, our Computrace Agent was embedded in the firmware of many computers at the factory. Or you can easily install it yourself.

The Agent in the firmware is incredibly persistent and allows your computers to maintain a connection with our Monitoring Center, even if the hard drive is completely reformatted or replaced.

Once the Agent is activated – your computers (and everything on them) are protected.

Lost or Stolen

In the event of loss, access the Absolute Customer Center to view the location of the computer. If your computer is stolen, contact us. The next time your computer connects to the internet, the Absolute Theft Recovery Team will forensically mine it using a variety of procedures including key captures, registry and file scanning, geolocation, and other investigative techniques to determine who has your computer and what they're doing with it.



Customer view of IT assets within Absolute Customer Center.

Most importantly, we will use our technology to pinpoint the physical location of your computer and work closely with local law enforcement to recover it.

IT ASSET MANAGEMENT, DATA PROTECTION AND THEFT RECOVERY

IT Asset Management

Manage all of your electronic assets with the ease of a single interface (regardless if a device is on or off your LAN) within the Absolute Customer Center. Monitor changes in asset information including user identification, physical location, and the installation of software/hardware that may not comply with government and corporate regulations. Computrace Complete includes advanced reporting capabilities.

You can add mobile hand-held devices to your asset management system with Computrace Mobile. Ask your Absolute sales representative for more information.

Data & Device Security

Delete data on missing computers and produce an audit log of the deleted files to prove your compliance with government and corporate regulations. Set alerts so you will be notified if non-compliance activities occur, including initiating a process to wipe a device clean if pre-set criteria are met.

Geotechnology

Use GPS or Wi-Fi technology to track your assets on an internet map. You will be able to see current and historical locations within about 33 feet. With Computrace Complete you can use the geofencing feature and create alerts by applying rules to pre-defined geographical areas. The use of GPS technology requires a GPS receiver. Contact your Absolute sales representative for a list of supported receivers.

Theft Recovery

If your computer is stolen, the Absolute Theft Recovery team will work with local police to locate it and return it to you.

Service Guarantee

You will be eligible to receive up to \$1000, if we are unable to recover your computer or perform the data delete service. Some conditions apply. For more details visit: www.absolute.com/service-agreement

Absolute Software Products

Computrace products by Absolute Software allow you to manage, track, and recover IT assets within your deployment. Visit www.absolute.com/products for more information.

	IT Asset Management	Data & Device Security	Geotechnology	Theft Recovery	Service Guarantee
Computrace Complete	●	●	●	●	●
Computrace Plus	●	●		●	
Computrace Mobile	●	●	●		
Absolute Track	●		●		
Computrace Data Protection	●	●	●		
Computrace for Netbooks	●	●		●	●

"We also need to plan for and refresh 2,500 – 3,000 computers each summer. This process was incredibly tedious. Before Computrace, we would assign 10 people to sleuth out the location of all of our computers over a three month period. We literally had 10 people with barcode scanners attempting to find 12,000 computers. It was a great effort.

With Computrace, we always know where our computers are. What was once a three-month process is now as simple as running a five-minute report that is more than 99% accurate. That is accountability."

Thuan Nguyen

Executive Director of Information Technology
Kent School District

www.absolute.com

System Requirements

PC

- Windows® 7™ (32 & 64-bit versions)
- Windows® Vista™ (32 & 64-bit versions)
- Windows® XP® (32-bit only)
- Windows® 2000
- Windows® Server 2008
- Windows® Server 2003
- Internet connection

Mac

- Mac® OS X v10.3 or higher
- Internet connection

Absolute Customer Center

- Windows® Internet Explorer®
- Mozilla Firefox 3 or above
- Mac Safari®